

HARRY CHARLES

Property Specialists



Conway Court, Watford, WD24 5GA

£1,500 Per month



**** WELL PRESENTED 4th FLOOR UNFURNISHED EXECUTIVE APARTMENT - HIGH SPECIFICATION FINISH - COMMUNAL ROOF TERRACE ON THE 7TH FLOOR - LIFT - OPEN PLAN LIVING ROOM/KITCHEN WITH ACCESS TO BALCONY - DOUBLE BEDROOM WITH FITTED WARDROBE - FAMILY BATHROOM - LOVELY OUTLOOK - AVAILABLE NOW **** We are delighted to offer for let on an unfurnished basis this modern 4th floor apartment in this development adjacent to Watford Junction mainline railway station. The property has been finished to a very good standard and has lots of high end fixtures including automated taps. Externally there is a communal roof terrace located on the 7th floor. Please contact us without delay to arrange an early appointment to view to avoid disappointment. Please note that this property does not come with any parking.

- Well Presented 4th Floor Apartment
- Lounge/Diner With Balcony
- Double Bedroom With Built In Wardrobe
- Council Tax Band C
- Lift
- Unfurnished
- Open Plan Kitchen
- Family Bathroom
- Communal Roof Terrace
- Available Now

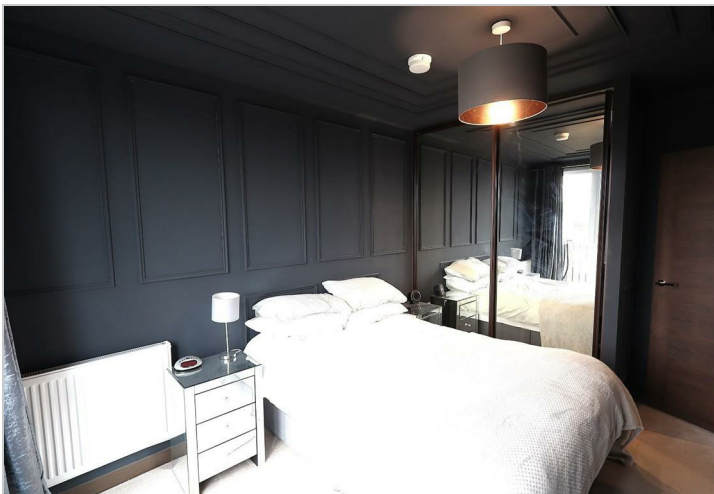
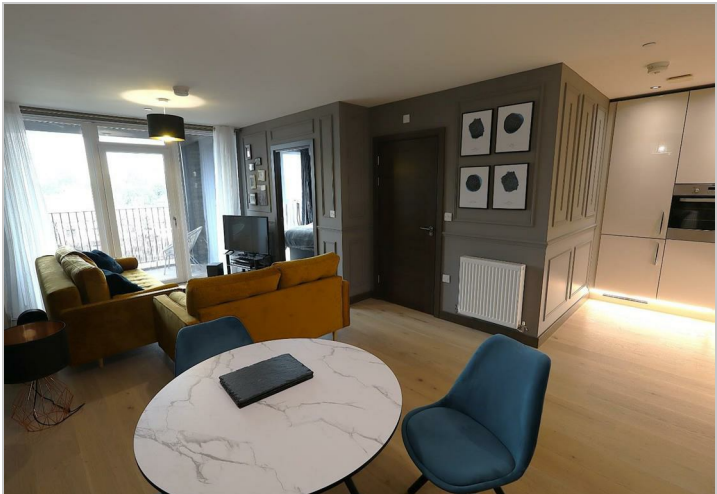
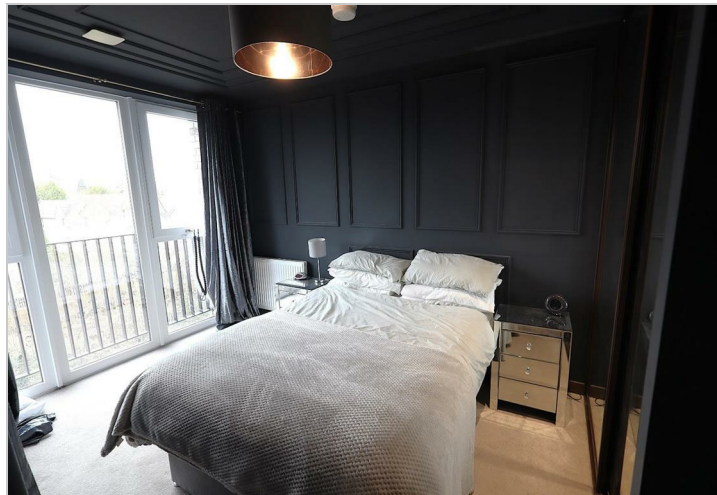
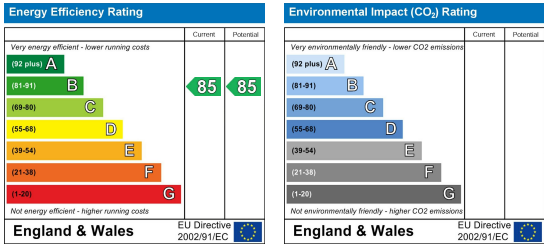


Additional Information

Area Map



Energy Efficiency Graph



These particulars, whilst believed to be accurate are set out as a general outline only for guidance and do not constitute any part of an offer or contract. Intending purchasers should not rely on them as statements of representation of fact, but must satisfy themselves by inspection or otherwise as to their accuracy. No person in this firms employment has the authority to make or give any representation or warranty in respect of the property.